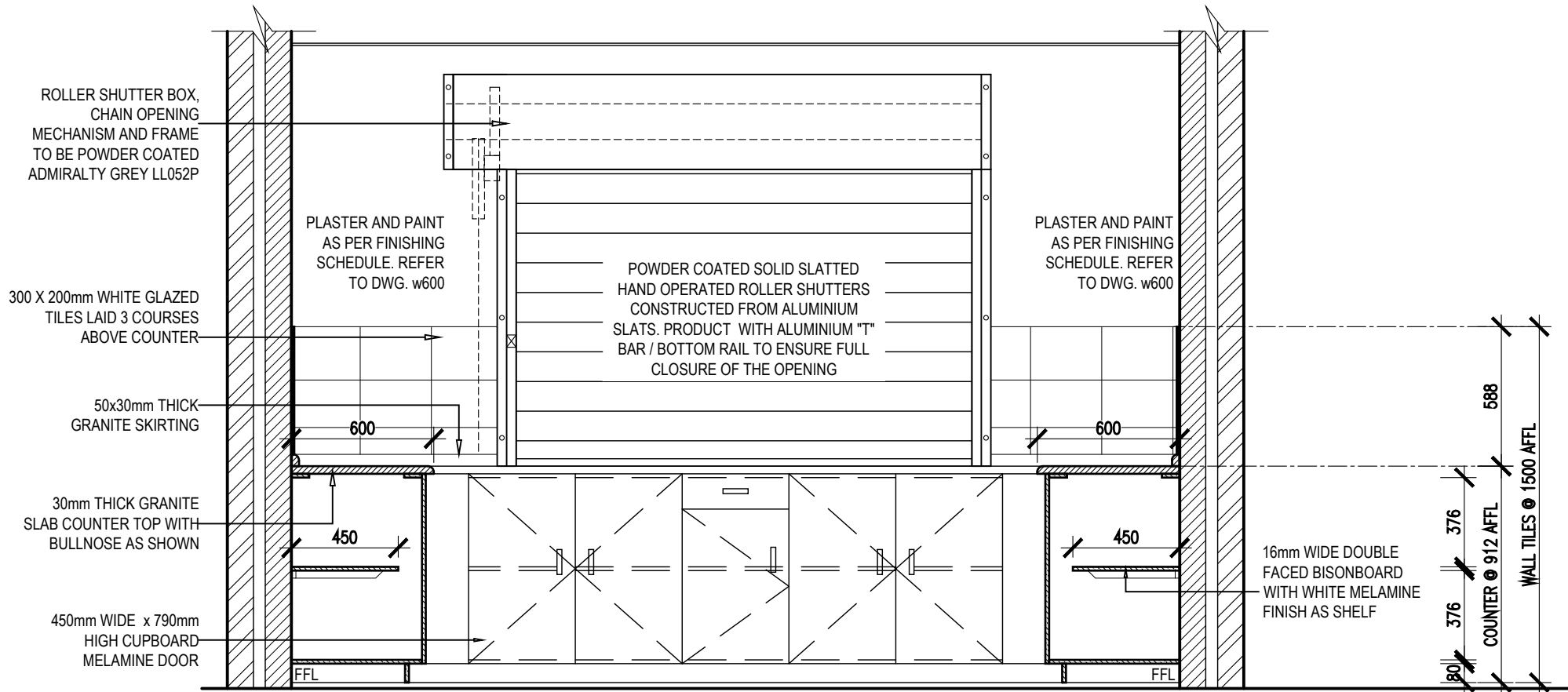
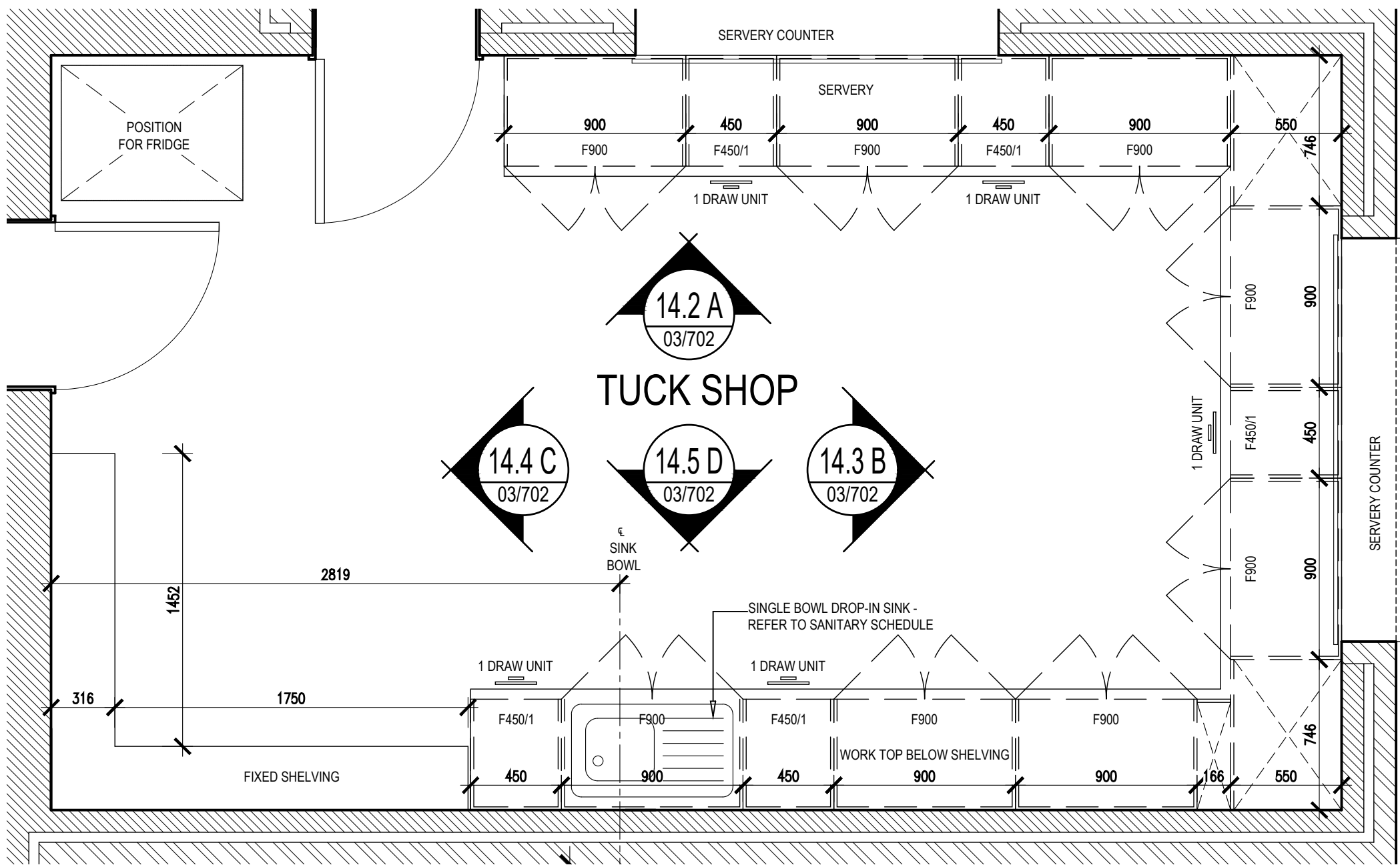


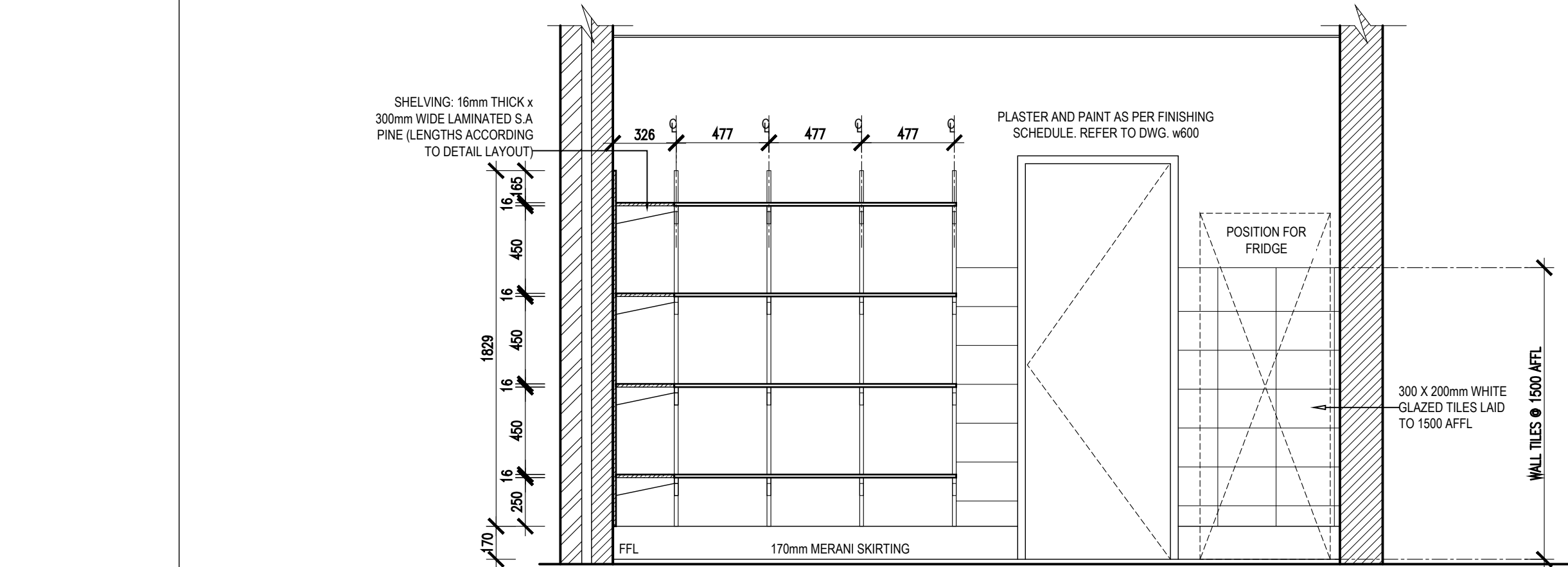
DETAIL 14.2: SECTIONAL ELEVATION A SCALE 1:25



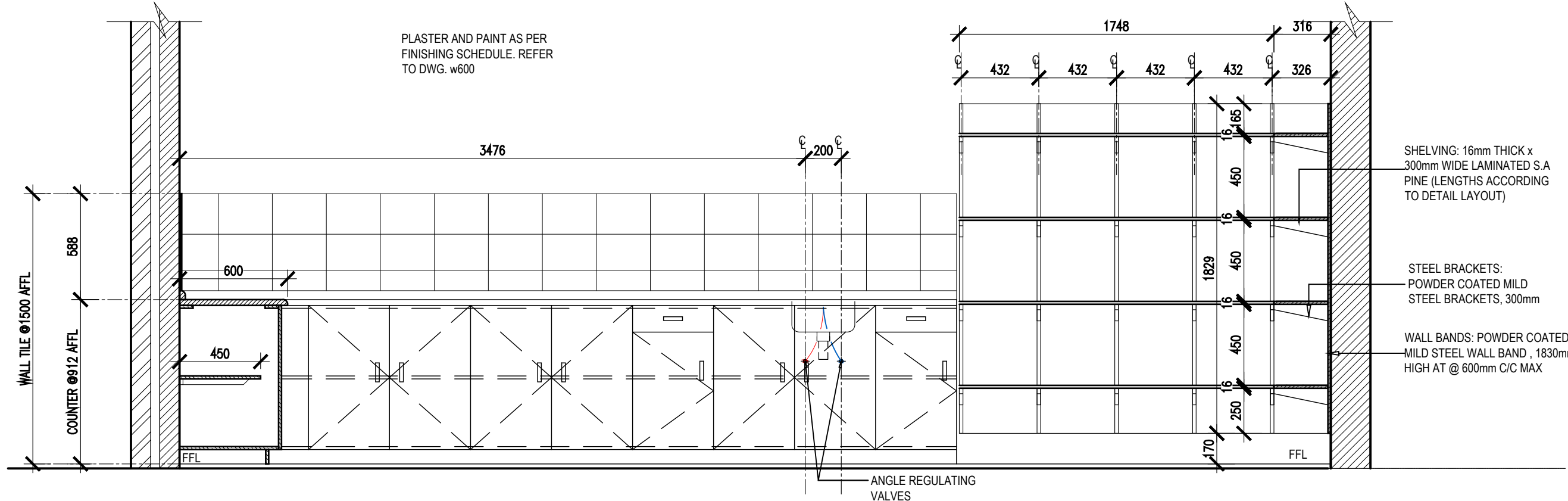
DETAIL 14.3: SECTIONAL ELEVATION B SCALE 1:25



DETAIL 14.1: TUCKSHOP PLAN SCALE 1:25



DETAIL 14.4: SECTIONAL ELEVATION C SCALE 1:25



DETAIL 14.5: SECTIONAL ELEVATION D SCALE 1:20

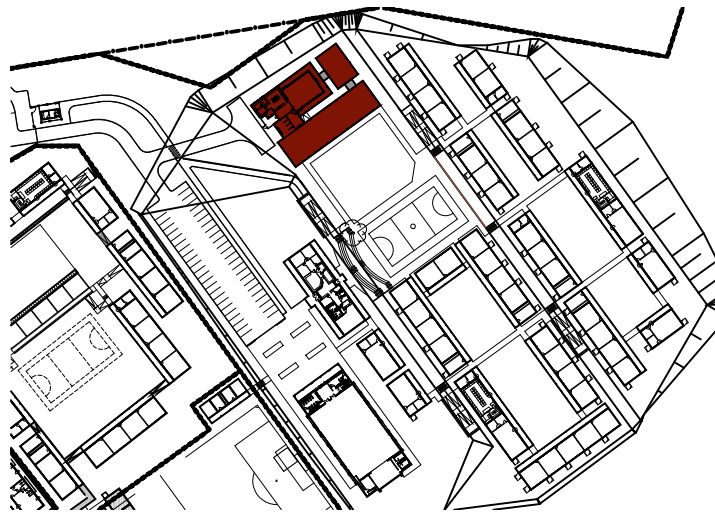
GENERAL SPECIFICATIONS;

DAY AND BULK STORES/
ADJUSTABLE SHELVING
WALL BANDS:
POWDER COATED MILD STEEL WALL BAND
HEIGHTS AS INDICATED ON PLANS @ MAX
800mm C/C
STEEL BRACKETS:
POWDER COATED MILD STEEL
BRACKETS 300mm
SHELVING:
16mm THICK x 300mm WIDE LAMINATED S.A
PINE (LENGTHS ACCORDING TO DETAIL
LAYOUT)
MODULAR STEEL SHELVING:
STEEL SHELVES AND SLOTTED STEEL
ANGLE POSTS AND CROSS BRACES ON
SIDES
KITCHEN
CUPBOARD SPEC NOTE
CUPBOARD CARCASSES TO BE 16mm
DOUBLE FACED BISONBOARD WITH WHITE
MELAMINE FINISH.
CUPBOARD DOORS TO BE 16mm DOUBLE
FACED BISONBOARD WITH WHITE MELAMINE
FINISH. SQUARE EDGED WITH 3mm WHITE
PVC EDGING ALL ROUND
GRANITE COUNTER TOPS TO BE 30mm THICK
COUNTER TOPS TO HAVE 50mm HIGH
GRANITE SKIRTING
VEG STORE
FIXED SHELVES
ALL SALIGNA BOARDERS TO BE SLIGHTLY
ROUNDED, THOROUGHLY SANDED AND
VANISHED WITH CLEAR PLYCON VARNISH
WORKSHOP DRAWINGS TO BE SUBMITTED
TO ARCHITECT BEFORE ANY WORK
COMMENCES.

NO.	DATE	REVISION	DRAWN
A	2021-03-01	ISSUED FOR INFORMATION	DW RJS
B	2022-07-09 2022-04-13	ISSUED FOR MEASURE ISSUED FOR INFORMATION (EPMS) 1. DWG NO. CHANGED FROM 1611 TO 2204	DW

ISSUED FOR
APPROVAL

KEY



PSP

ARCHITECT



ARCHITECTURAL PROFESSIONAL SACAP NUMBERS:

H.L. MANTEL SACAP 3045

IMPLEMENTED BY

INDEPENDENT
DEVELOPMENT
TRUST

SIGNATURE	DATE	SHEET NO.
DESIGNED	-	SCALE 1:100
DRAWN	SG	STATUS LISTED: FM = FOR MEASURE T = TENDER C = CONSTRUCTION AB = AS BUILT CO = CO-ORDINATION
VERIFIED	-	
VALIDATED	-	

CLIENT



IMPLEMENTING
AGENT



PROJECT
DOE PORTFOLIO PROGRAMME
ESTABLISHMENT OF NEW SCHOOLS
HILLBROW - SENIOR SECONDARY SCHOOL
PROVINCE: EASTERN CAPE PROVINCE
DRAWING TITLE
NUTRITION CENTRE (LARGE)
(BLOCK S-C) JOINERY DETAILS
PART 3 OF 4 - TUCKSHOP

DRAWING DESCRIPTION

EMIS NUMBER	DISCIPLINE	DRAWING NUMBER	STATUS	REVISION
200500293	ARCH	2204 w07-03/702	FA	B